



MODERN

QUARRYING

QUARTER 3 | 2022

22 Rooikraal Quarry's closed water circuit

28 Lifetime costs of fabricated parts for vibrating screens

BUILT FOR THE LONG HAUL

JOHN DEERE

LAUNCHES ITS 460E-II ADT

04



Scan QR Code to watch the John Deere 460E Series II Articulated Dump Trucks
Or hit the play button if you are reading online or the pdf version



JOHN DEERE

This John Deere-designed machine delivers ultimate productivity with a redesigned wider dump body, electrical and hydraulic systems, and new drive modes to help quarries get the job done in various conditions.



JOHN DEERE INTRODUCES NEW ADT TO SOUTHERN AFRICA MARKET

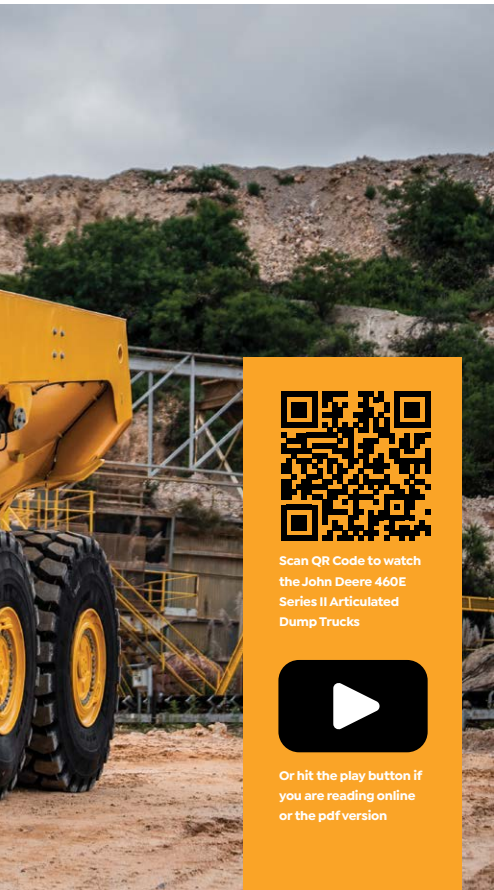
Designed with the demands of today's job site in mind, John Deere has introduced the new 460E-II Articulated Dump Truck (ADT) to the local market. This John Deere-designed machine delivers ultimate productivity with a redesigned wider dump body, electrical and hydraulic systems, and new drive modes to help quarries get the job done in various conditions. John Deere says that this machine is built for the long haul as it is aimed at optimal productivity, is easy to run and is highly efficient. **Modern Quarrying** attended the launch of this ADT in Johannesburg where it was positioned within the John Deere value proposition that aims to give customers peace of mind.

The John Deere DNA

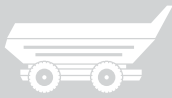
Jaco Beyers, John Deere's Managing Director Africa Middle East says that John Deere has made a commitment to infrastructure. "By 2050 the African continent will have a population of 2,5 billion people who will need to be fed and will need infrastructure. We are fortunate to be part of the world's leading agricultural machine producer – it is also the world's third largest mining and construction equipment producer

and the world's biggest producer in road building equipment."

Five years ago John Deere embarked on a journey to redesign its channel. "In the Africa Middle East region it was started 18 months ago: we selected the strongest dealers – these are our channel partners. These dealers have established a footprint across Africa which allows them to stay close to customers. They have invested in infrastructure, personnel, tools and training to enable



KEY TAKEAWAYS



A vital feature of 460E-II ADT is the redesigned dump body, which is wider and has a lowered and levelled rail height to improve material retention and allow it to be loaded easily.



All servicing is conducted from ground level and no climbing onto stairs or platforms is required.



Remote diagnostics enable dealers and customers to monitor machines remotely and react quickly and proactively when problems occur.



Some 68% of parts are common among agri and construction machines.

John Deere to support yellow metal for many years to come," he says.

"Our equipment is designed for fuel efficiency, productivity and operator comfort. In the John Deere DNA, technology is what has driven it forward. There has been pioneering technology in agricultural equipment and this will be piloted on yellow equipment," Beyers states.

Value proposition

"Our value proposition includes aftermarket support, parts availability, servicing and financing support. It is easy to sell the first product, but keeping them running is the real test. Thus the reason why we started with a small range of construction equipment: we wanted to ensure parts availability and that our staff had the correct training," adds Beyers.

Given the 24/7 operating context of construction, John Deere understands the importance of having parts available for machines. "Our dealers are the first in line of our customer service. We serve the markets for agricultural and construction equipment through the same channel," says Glenys



Millingham, Manager Aftermarket Sales, Africa and Middle East. "The dealer parts management system is used by both the agricultural and construction markets and ensures a standardised system for our dealer personnel." Some 68% of parts are common among agri and construction machines.

A good context for an ADT

Against this background John Deere has introduced the 460E-II Articulated Dump Truck. E-II

Trucks combine the most popular features of the E-Series line with customer-driven performance and operation enhancements, resulting in a machine that is easier and more cost-effective to operate. It is designed and manufactured with state-of-the-art tools and techniques in Iowa.

John Deere has been selling ADTs for 25 years in North and South America. These were built in Richards Bay. In 2004 John Deere began manufacturing the



D series of ADTs in its own factory in Davenport, Iowa. Their own E-series range of four ADTs was first introduced in 2012. Last year this range was upgraded to the current E series with enhancements in terms of economy, performance, reliability and serviceability.

The 460E-II has a 13,5 litre turbo intercooled inline 6 engine which is also fitted to other large construction machines and agricultural machines – with all the benefits of parts commonality.

Built to maximise performance

A vital feature of 460E-II ADT is the redesigned dump body, which is wider and has a lowered and levelled rail height to improve material retention and allow it to be loaded easily. Additionally, the bin rail features an angled top, helping to reduce material spillage while travelling.

The 460E-II model is also available with a new ejector body solution. This solution allows operators to spread a load over a given area and can be used in areas with overhead powerline concerns or where the risk of rollover is high due to steep grade unloading.

Improved fuel consumption

The three drive modes available



Our equipment is designed for fuel efficiency, productivity and operator comfort. In the John Deere DNA, technology is what has driven it forward. There has been pioneering technology in agricultural equipment and this will be piloted on yellow equipment

on the 460E-II ADT help optimise the drivetrain, reduce inputs from the operator, and enable easy customisation.

Normal Mode for everyday operation reduces fuel burn by up to 7% compared to existing models. In contrast, **Eco Mode**, when conditions allow, conserves fuel by managing engine power delivery and optimises transmission response for those conditions, thus improving fuel consumption by up to 12% compared to Normal Mode. **Traction Mode** optimises differential lock for maximum tractive effort in soft and slippery ground conditions.

The new wheel-speed sensors also provide a more accurate reading than the ground-speed radar to confirm the traction-boosting

auto-differential lock engages when needed.

With these modes, the clients' operation will save fuel costs and help reduce the operation's environmental impact.

Designed for durability

The John Deere 460E-II ADT axles are designed for heavy-duty and longer life. They are lubricated, filtered, and cooled to extend their service life, while the spring-applied, hydraulic-released park brake is also highly reliable.

The inboard wet-disc brakes run cool, clean, and unexposed. Each of the brake axles are force cooled and filtered separately. The cooling oil is separate and not shared, ensuring that cross-contamination



is never possible. Combined with the strong transmission retarder, they help deliver consistent stops and maximum brake life.

Improved reliability

The hose and wire routing on the ADT has been simplified to reduce rubbing and improve reliability, while the factory-installed auto lube further boosts uptime and reliability.

The redesigned electrical and hydraulic systems maximise machine uptime with a 10% reduction of electric and hydraulic routings, further reducing leak points and improving reliability.

Safety first

Safety is paramount. The John Deere 460E-II ADT features a number of safety features that help keep operators out of harm's way, such as; remote park-brake release, rollover protection, ground-level service, and auto horn.

With rollover protection, operators can set limits for the rear-chassis level when unloading. If the limit is exceeded, the dump body will not raise, and an alert message will appear on the monitor.

All servicing is conducted from

ground level and no climbing onto stairs or platforms is required.

Operator comfort is key

This model's updated operator station includes features that promote increased productivity and all-round comfort. One of the most notable features is the single switch model, reducing the

number of switches by 25% compared to previous models.

The quiet, pressurised Deere-designed cab also features a new, easy-to-read monitor and rear-camera display, along with options such as premium heated/ventilated seat and automatic temperature control (ATC) system. ●

About John Deere

With a rich history of more than 140 years in South Africa, John Deere is a trusted, world-renowned leader in producing turf, agricultural, construction, and forestry machinery solutions with state-of-the-art precision technology. With its continued focus to strengthen its presence throughout the Africa Middle East region (AME), John Deere AME serves its customers through more than 218 dealer touch points across Africa Middle East and supports its dealer network with a Regional Parts Distribution center in South Africa as well as sales and marketing offices in South Africa and Kenya.

Committed to delivering a distinctive customer experience coupled with solutions-driven advice from its authorised dealer network and John Deere Financial Solutions, John Deere AME promotes food security while actively driving a successful and inclusive agricultural community while supporting Africa's growth via its construction and forestry solutions.