

S700 SERIES

COMBINES



JOHN DEERE

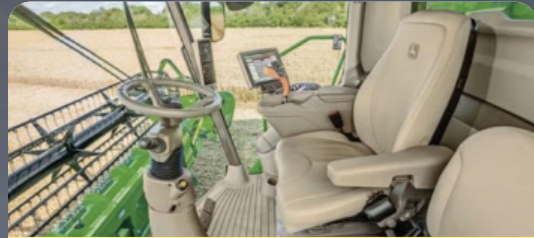
S700 SERIES COMBINES

The S700 Series combines are designed and manufactured for grain producers and contractors that utilize automation and technology while harvesting to easily manage their data, automation, and residue needs.

THE PERFECT ALL-ROUND HARVESTER FOR ANY SEASON:



Ensuring higher efficiencies, productivity, fuel saving, comfort and sustainability.



ULTIMATE COMFORT

- Largest and **best in class cab volume** (3.3m³)
- 37 Liter **active Refrigerator**
- **Improved operator comfort** through minimal physical movements for forward and rear visibility
- Best-in-class visibility due to optional **LED lighting**
- **Comfortable seat** with premium air suspension to overcome long harvesting days
- The intuitive **CommandARM™ console**, along with the **4600 CommandCenter™ Display**, delivers easy-to-understand harvest run screens and easy to use across multiple Deere machines
- More **convenience from the cab** with platform tilt, precision residue, and easy crop changeover when it's time to move fields



SEAMLESS PRECISION

JDLink™ provides easy machine and agronomic data flow into Operations Center

- **Machine specific activations:** AutoTrac™, RowSense™, Machine Sync, In-field Data Sharing, Wireless Data Transfer
- **Remote Display Access (RDA)** enables viewing machine performance from anywhere via the MyOperations™ App
- **25.4cm Display screen** – developed in combination with the **CommandARM™ console** and the multifunction control lever



INCREASED PRODUCTIVITY

Increased Productivity through effective feeding, threshing and separation designs ensure:

- **Single rotor design** - instead of splitting crop flow up into two streams, it keeps a single crop flow which consumes less power
- **TriStream™ rotor design** maximize fuel efficiency by up to 20%
- **Variable stream rotor** maximise throughput and smoother crop flow provides high fuel efficiency and maximum threshing performance
- **Dyna-flow™ Cleaning shoe** - large sieve area ensures maximum cleaning and minimum losses



LESS COMPACTION

With John Deere tracks that are fully suspended

- 30% Larger ground contact area for less compaction
- Transport speeds up to 40 km/h
- 20% More comfort and smoother ride even in rough conditions
- 50% Increased durability for lower cost of operation
- Triangular design provides good ground clearance and has excellent self-climbing properties in unstable ground
- The five-point pivot design with small distances between the pivot points and rollers ensure that the tracks follow the ground for better grip.
- Significantly reduced vibration for better ride quality
- Zero maintenance - self-lubricating properties which reduce wear and tear
- Sealed gearboxes and bearings remove the need for regular greasing. Daily maintenance is not required which provides high operator convenience



IMPROVED RESIDUE MANAGEMENT

Auto Swap Residue Management enables the machine to automatically adjust residue spread direction to compensate for wind.



ACTIVEVISION™ CAMERAS

View grain quality in near-real time with ActiveVision Cameras. Working in conjunction with Combine Advisor™, you can have confidence the system is adjusting even as on-the-go conditions change.



PERFECT HEADER

John Deere headers are engineered specifically for John Deere combines

- Make header adjustments from the cab using John Deere's seamless technology
- Hook up the head quickly and easily with the feeder house multi-coupler
- Use one dealer for all sales, support, parts and service

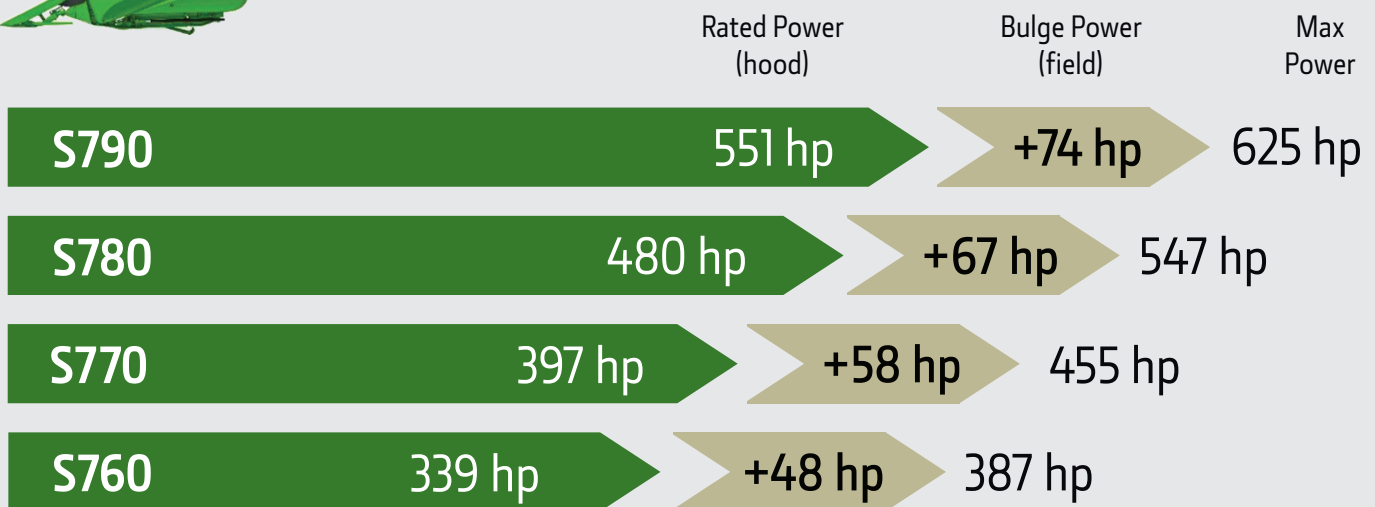
| | S760 | S770 | S780 | S790 |
|--------------------------------|-----------------------------|---------------|------------------------------|---------------|
| SPECIFICATIONS | | | | |
| Engine Type | PowerTech™ PSS Engine 9.0 L | | PowerTech™ PSS Engine 13.5 L | |
| Rated Power | 333hp (249kW) | 391hp (292kW) | 473hp (353kW) | 543hp (405kW) |
| Fuel Capacity | 950 L | | 1,250 L | |
| Concave Area | | | 1.1m ² | |
| Separating Area | | | 1.54m ² | |
| Total Cleaning Area (Louvered) | 5.1 m ² | | 5.9 m ² | |
| Grain Tank Size | 10,600 L | | 14,100 L | |
| Unloading Rate | 116.3 L/s | | 135 L/s | |

S700 Series combines are designed and manufactured for grain producers and contractors that utilize automation and technology while harvesting to easily manage their data, automation, and residue needs.

Experience why John Deere S700 Series combines will make the difference and ensure **higher efficiencies, productivity, fuel saving, comfort and sustainability.**



Let Technology work for you - Harvesting made easy through **Combine Advisor™** – technologies automatically setting and optimizing the combine to maintain performance targets as conditions change.



This literature has been compiled for broad circulation in Africa Middle East. While general information, pictures and descriptions are provided, some illustrations and text may include finance product options and accessories not available in all regions. Please contact your local dealer for details. John Deere reserves the right to change specification and design of products described in this literature without notice. The green and yellow colour scheme, the leaping deer logo and the JOHN DEERE word mark are trademarks of Deere & Company.