

	5076EF OOS	5076EN OOS	5076EN CAB	5090EN OOS	5090EN CAB
<b>ENGINE</b>					
Rated power (97/68EC) hp (kW)	75hp (56kW)	75hp (56kW)		92hp (68.6kW)	
Maximum Torque, Nm	305.1	305.1		355	
Torque Reserve, percentage (%)		24%			
PTO Power hp (kW) @ 2400 engine rpm	48 (35.8)	55 (41.0)	63 (46.9)		
Aspiration	Turbo Charged				
Engine Manufacturer	John Deere Power Systems				
Engine Type (3 Cylinder), Displacement	4.5 L PowerTech, Turbo Charged Diesel Engine				
Fuel System	Distributor-type Injection Pump, Direct Injection				
Air Filter	Dry Type, Dual				
Cooling system	Liquid Cooled				
<b>TRANSMISSION</b>					
9F/3R Synchronised Transmission (with Dry Clutch)	OOS TWD/MFWD	OOS TWD/MFWD	OOS TWD/MFWD		
<b>CLUTCH</b>					
Clutch	Dry Clutch (DC) / Wet Clutch (WC)				
<b>REAR AXLE</b>					
OOS/CAB	Inboard Planetary Final Drives				
<b>FRONT AXLE</b>					
2WD (Two Wheel Drive)	Optional	Optional	Optional	Optional	Optional
MFWD (4 Wheel Drive) Front Axle	X	N/A	N/A	N/A	N/A
MFWD (4 Wheel Drive) Front Axle Electrohydraulic	N/A	X	X	X	X
<b>STEERING</b>					
Type (OOS/CAB)	Hydrostatic Power Steering				
<b>BRAKE</b>					
Type	Hydraulic Actuated Wet Disk Brakes - Self Adjusting				
Secondary Brake	Hand Brake				
<b>HYDRAULIC SYSTEM</b>					
Type (OOS/CAB)	Open Center Hydraulic System				
Steering Pump Total flow (L/pm)	24,9				
Implement Pump (L/pm)	60,2				
Maximum No. of SCV's OOS/CAB	1 / 2 Double Acting Rear Selective Control Valves				
<b>ELECTRICAL SYSTEM</b>					
Alternator Size (A)	70	70	90	70	90
<b>3- POINT HITCH REAR</b>					
Category	3-Point (Category II) Hitch with Sway Chains				
Lift Capacity at the ball (kg)	1900				
<b>REAR POWER TAKE-OFF (PTO)</b>					
540 RPM Rear PTO Shaft	X	Optional	Optional	Optional	Optional
540/540E RPM Rear PTO Shaft	Optional	X	X	X	X
<b>OPEN OPERATOR STATION</b>					
Type	Two Post Roll Over Protective structure (ROPS) with Canopy (w/o Canopy Lights)				
Instrument Panel	Digital Dashboard Display				
<b>CAPACITIES</b>					
Fuel Tank (L)	63	63	63	63	63
<b>DIMENSIONS and WEIGHTS</b>					
Wheelbase (mm)	2084				
Ground clearance (mm), Center MFWD without front ballast	291				
Tractor weight (kg) shipping weight not ballasted	2760	2760	2940	2760	2940
<b>WHEELS and TIRES</b>					
Front wheels (2WD)	6.50-16 (6PR)				
Front Wheels (MFWD) (Radial tire technology)	280/70R16				
Rear Wheels (Radial tire technology)	380/70R24				

This literature has been compiled for broad circulation in sub-Saharan Africa. While general information, pictures and descriptions are provided, some illustrations and text may include finance product options and accessories not available in all regions. Please contact your local dealer for details. John Deere reserves the right to change specification and design of products described in this literature without notice. The green and yellow colour scheme, the leaping deer logo and the JOHN DEERE word mark are trademarks of Deere & Company.

The literature on the 5e 3 Cylinder is related only to all sub-Saharan Africa markets excluding South Africa

# 5E SERIES

## 3 CYLINDER SERIES TRACTORS



# 5E SERIES 3 CYLINDER SERIES TRACTORS

THE PERFECT FIT FOR YOUR GENERAL FARMING OPERATIONS

The ideal compact designed tractor for smaller livestock operations, production of grains, High-value crop applications and a general all-rounder on the farm to assist you with your daily operations.



GRAINS



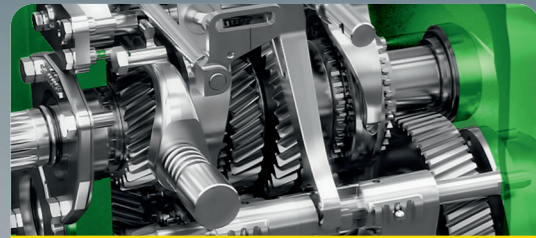
BEEF & DAIRY



HAY & FORAGE



HIGH VALUE CROP



## TRANSMISSION OPTIONS

3 different transmission options to choose from:

- **9F/3R CS (Collar Shift) transmission,**
- **9F/3R SyncShuttle™ TSS (Top Synchro Shaft transmission)**
- **12F/12R PowrReverser™ transmission.**

The **SyncShuttle™** transmission with pressurized lubrication of the top shaft benefits secure unsurpassed transmission reliability in any application.

The **12F/12R PowrReverser™** transmission offers a wider selection of speed gears, a hydraulic forward reverser and Electro Hydraulic clutch, easing direction change and complementing application at the ideal speed.



## OPERATOR STATION

Increased productivity, reduced operator fatigue and greater maneuverability, are complemented by this tractor. The ergonomically designed Comfortable Operator Station includes features such as:

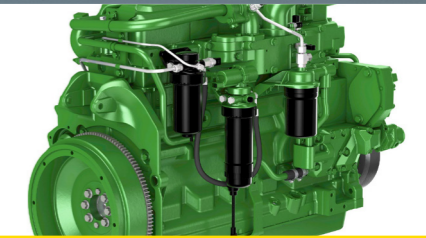
- **adjustable seat**
- **hydrostatic steering wheel**
- **Multifunctional Instrumental Panel**
- **controls and instrumentation that are well positioned for easier operations.**



## 540/540E PTO

The **540Economic PTO (Power Take Off)** is the preferred choice to ensure lowest fuel consumption throughout the operation.

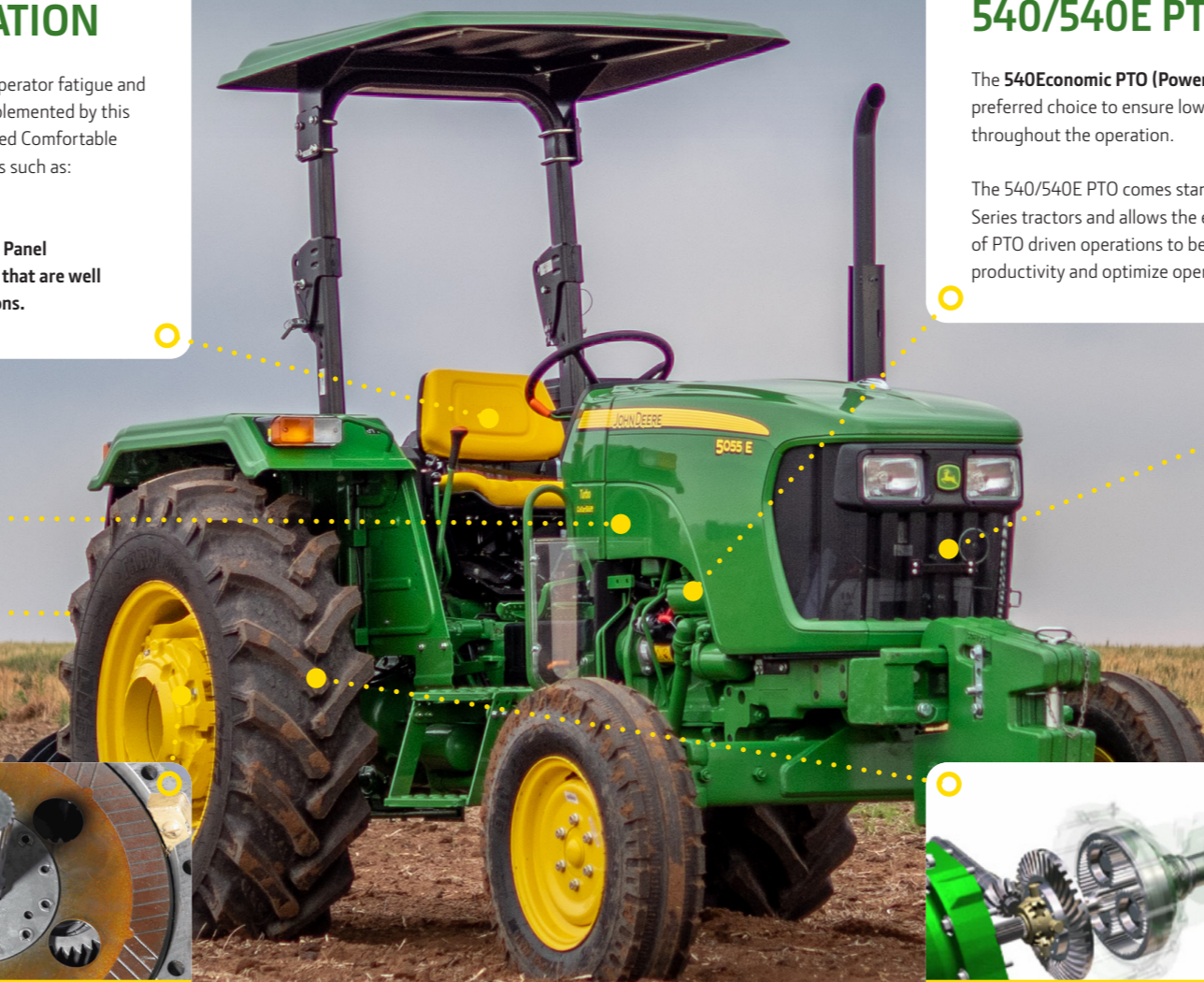
The 540/540E PTO comes standard with the 5E Series tractors and allows the efficient application of PTO driven operations to benefit improved daily productivity and optimize operational cost.



## 2,9L POWERTECH™ ENGINE

This robust 2.9L John Deere PowerTech™ engine does not only boast in power, but it was engineered in being economical as well by providing you efficient fuel consumption in daily operations.

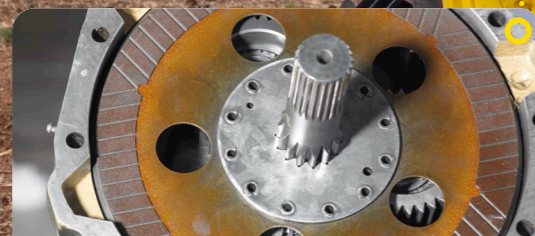
The high-performance engine delivers a 24% torque reserve allowing ease of operation through tough spots without the need to change any gears.



## THREE POINT HITCH

The Three Point Hitch is designed to match your implements for optimal efficiency.

An industry leading hitch load and depth control functions, allow you to adjust the hitch function based on the specific application needs increasing productivity within any operation.



## SELF ADJUSTING OIL EMERGED BRAKES

The 5E 3 Cylinder tractor series comes standard with Self adjusting oil emerged brakes. In comparison to disc brakes, this allows for a more responsive braking experience especially when carting a heavy load. A reliable feature that ensures a longer lifespan on your tractor's breaks.



## INBOARD PLANETARY FINAL DRIVE

The heavy-duty Final Drive on the 5E tractors ensures trouble free application in severe heavy duty primary tillage applications.

Designed with onboard planetary final reduction gears ensuring efficient power through the rear axle to the ground. This feature permits longevity for the driveline components.



## GENUINE JOHN DEERE PARTS

John Deere delivers quality parts that are tailored to enhance the performance, comfort, and reliability of your tractor. Genuine tractor parts operate and function perfectly as they are created when the tractor is designed and developed. Your John Deere tractor will stay as reliable as the day it was bought - for years and years to come.