

	5039D	5045D	5050D
<b>ENGINE</b>			
Rated power (97/68EC) hp (kW) (@ 2100 engine rpm)	39 hp (30.8 kW)	46 hp (34.5 kW)	50 hp (36.5 kW)
Maximum Torque, Nm	153 N.m @ 1200 rpm	175 N.m @ 1300 rpm	192 N.m @ 1200 rpm
Torque Reserve, percentage (%)	17%	15%	16%
PTO Power hp (kW) @ 2400 engine rpm	34.8 (26.1)	37.2 (27.8)	41.5 (31.0)
Aspiration	Naturally Aspirated		Turbo Charged
Engine Manufacturer	John Deere Power Systems		
Engine Type (3 Cylinder), Displacement	2.9 L PowerTech Diesel Engine		
Fuel System	Inline Fuel Injection Pump, Direct injection		
Air Filter	Dry Type, Dual Element		
Cooling system	Liquid Cooled		
<b>TRANSMISSION</b>			
8F/4R Collar Shift Transmission	X	X	X
<b>CLUTCH</b>			
Dual (Dry Clutch)	X	X	X
<b>REAR AXLE</b>			
3 Pinion	Inboard Planetary Final Drives		
<b>FRONT AXLE</b>			
2WD - Adjustable/Fixed	X	X	X
MFWD - Mechanical Front Wheel Drive Fixed Track	N/A	Optional	Optional
<b>STEERING</b>			
Type (OOS/CAB)	Hydrostatic Power Steering		
<b>BRAKE</b>			
Type	Hydraulically Actuated Wet Disk Brakes		
Secondary Brake	Hand Brake		
<b>HYDRAULIC SYSTEM</b>			
System Type	Open Center Hydraulic System		
Total Flow (L/min)	36.1		
Maximum No. of SCV's	1 x Double Acting - Rear Selective Control Valve		
<b>ELECTRICAL SYSTEM</b>			
Alternator Size (A)	40		
Battery Size (Ah)	12V, 88Ah		
<b>3- POINT HITCH REAR</b>			
Hitch Category	CAT II with sway chains		
Lift Capacity at the ball (kg)	1600		
Wagon Hitch	All countries excluding Botswana, Eswatini, Namibia, South Africa		
Drawbar	Botswana, Eswatini, Namibia, South Africa		
<b>REAR POWER TAKE-OFF (PTO)</b>			
540 @ 2100 engine rpm	X	X	X
540E @ 1600 engine rpm	X	X	X
<b>OPEN OPERATOR STATION</b>			
Open Operator Station	X	X	X
<b>CAPACITIES</b>			
Fuel Tank (L)	60		
<b>DIMENSIONS and WEIGHTS</b>			
Wheelbase (mm)	1950		
Ground clearance (mm), Center MFWD without front ballas	380	460 (TWD) / 365 (MFWD)	440 (TWD) / 365 (MFWD)
Tractor weight (kg) shipping weight not ballasted	1795	1825 (2WD) / 1975 (MFWD)	
<b>WHEELS and TIRES</b>			
Front Wheels (Radial tire technology)	6.0x16	6.0X16 (2WD) 8.0X18 (MFWD)	6.0X16 (2WD) 8.0X18 (MFWD)
Front Wheels (MFWD) (Radial tire technology)	13.6X28	13.6X28 (2WD) 14.9X28 (MFWD)	13.6X28 (2WD) 14.9X28 (MFWD)

This literature has been compiled for broad circulation in sub-Saharan Africa. While general information, pictures and descriptions are provided, some illustrations and text may include finance product options and accessories not available in all regions. Please contact your local dealer for details. John Deere reserves the right to change specification and design of products described in this literature without notice. The green and yellow colour scheme, the leaping deer logo and the JOHN DEERE word mark are trademarks of Deere & Company.



# 5D SERIES

## 3 CYLINDER TRACTORS





# 5D SERIES 3 CYLINDER TRACTORS

THE PERFECT FIT FOR YOUR GENERAL FARMING OPERATIONS

A low horsepower tractor ideally designed for agricultural purposes. The solution for a wide range of applications. Benefit with ample torque to power through those tough spots.



GRAINS



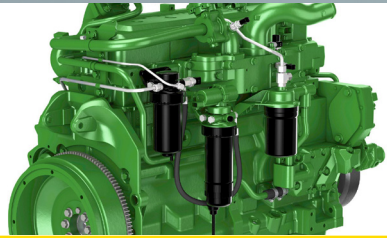
BEEF & DAIRY



HAY & FORAGE



HIGH VALUE CROP



## ROBUST ENGINE PERFORMANCE

A high-performance **2.9L John Deere PowerTech™ engine**, with a piston spray benefit. This uniquely designed system provides continuous oil spray on the piston which helps dissipate excess heat, optimizing engine operating temperature and improving engine efficiency. The optimum engine operating temperature enhances the life of critical engine parts and reduces maintenance costs. This uniquely designed system also delivers lower fuel consumption and improved field productivity.



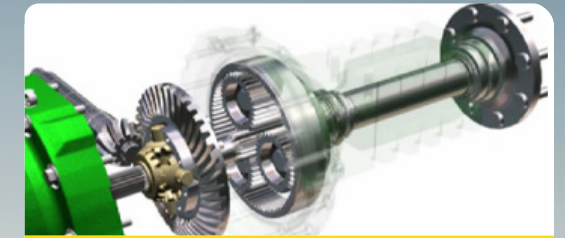
## OPERATOR STATION

An ergonomically well-designed **comfortable operator's station** with easy seat positioning, hydrostatic steering wheel, optimally positioned controls and instrumentation that offers easy operation of the tractor which reduces operator fatigue. Application within orchards are made easy with the compact design and improved maneuverability in confined spaces.



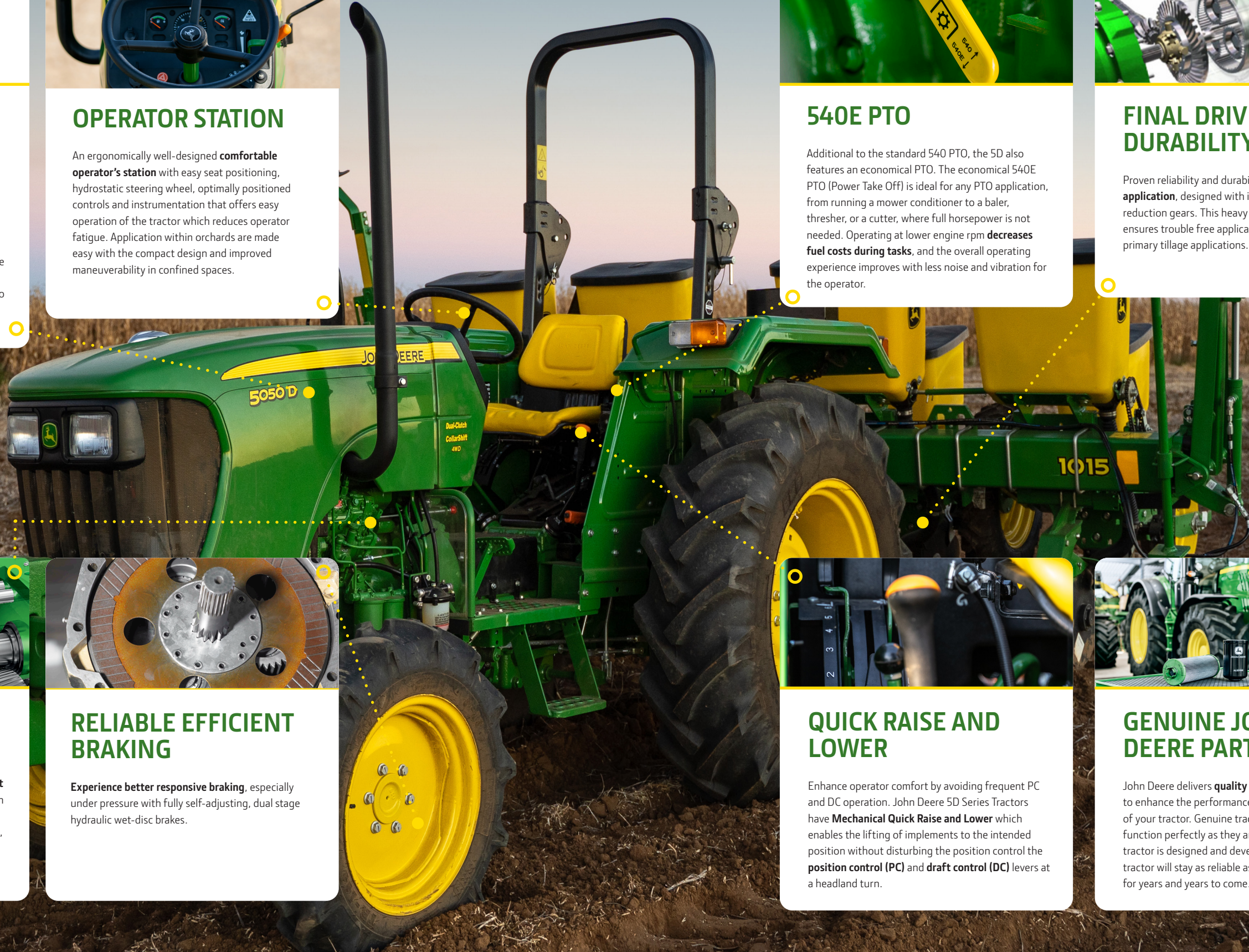
## 540E PTO

Additional to the standard 540 PTO, the 5D also features an economical PTO. The economical 540E PTO (Power Take Off) is ideal for any PTO application, from running a mower conditioner to a baler, thresher, or a cutter, where full horsepower is not needed. Operating at lower engine rpm **decreases fuel costs during tasks**, and the overall operating experience improves with less noise and vibration for the operator.



## FINAL DRIVE DURABILITY

Proven reliability and durability in **any heavy duty application**, designed with inboard planetary final reduction gears. This heavy duty final drive design ensures trouble free application in severe heavy duty primary tillage applications.



## COLLAR-SHIFT TRANSMISSION

Achieve excellent results with the **8F/4R Collar-Shift transmission**. The transmission is designed to match the excellent power and torque characteristics of the John Deere PowerTech™ engine. Constant-mesh, helical gears create a quieter working environment and provide excellent reliability.



## RELIABLE EFFICIENT BRAKING

Experience **better responsive braking**, especially under pressure with fully self-adjusting, dual stage hydraulic wet-disc brakes.



## QUICK RAISE AND LOWER

Enhance operator comfort by avoiding frequent PC and DC operation. John Deere 5D Series Tractors have **Mechanical Quick Raise and Lower** which enables the lifting of implements to the intended position without disturbing the position control the **position control (PC)** and **draft control (DC)** levers at a headland turn.



## GENUINE JOHN DEERE PARTS

John Deere delivers **quality parts** that are tailored to enhance the performance, comfort, and reliability of your tractor. Genuine tractor parts operate and function perfectly as they are created when the tractor is designed and developed. Your John Deere tractor will stay as reliable as the day it was bought - for years and years to come.